



ArcGIS: Una plataforma interoperable

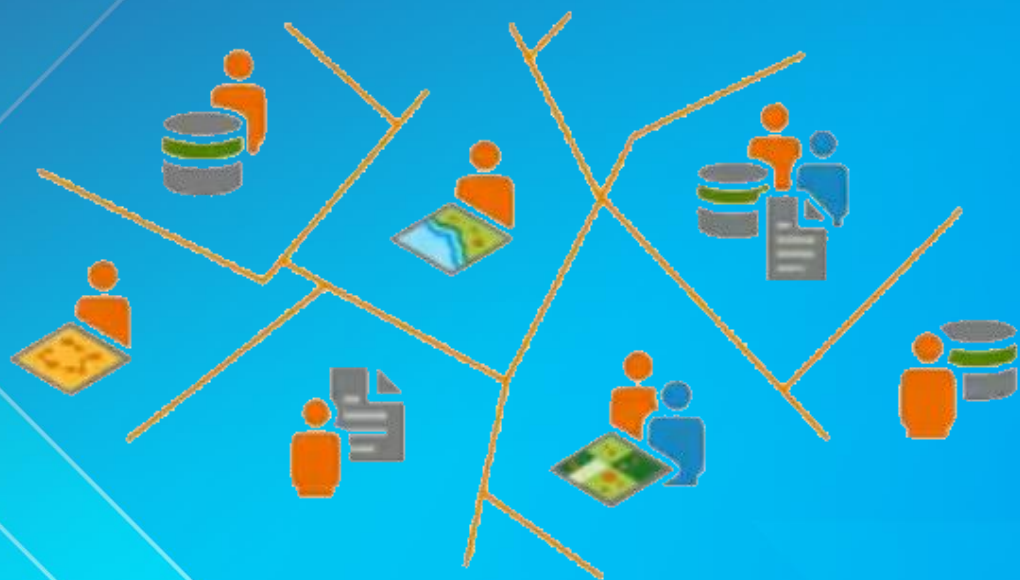
Roberto Padilla

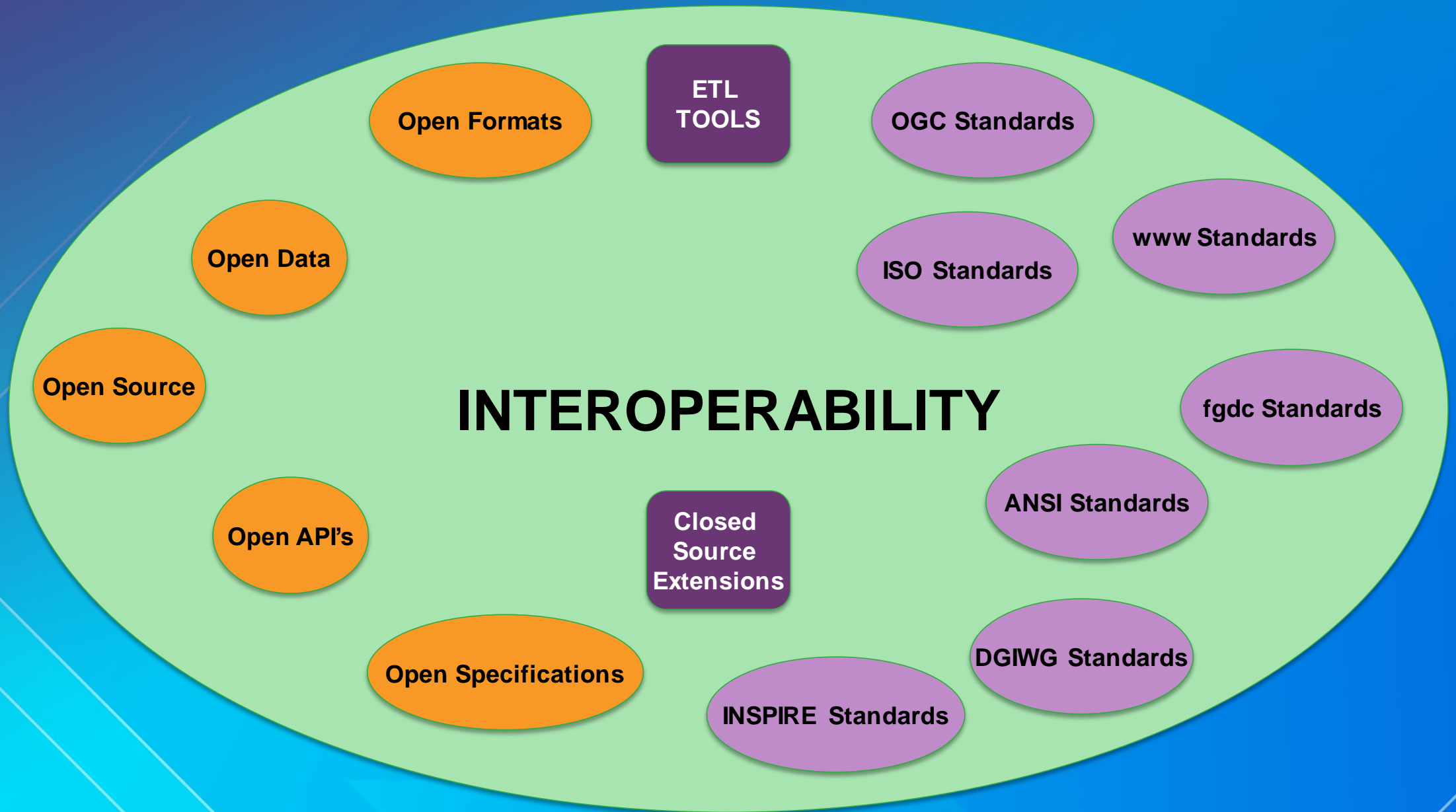


Tópicos

- El Rol de la interoperabilidad
- Lograr la interoperabilidad
- Tecnologías de ArcGIS – soporte a estándares
- Interoperabilidad a nivel de formatos de datos
- Interoperabilidad a nivel servicios y metadata
- Soporte a OGC
- Componentes de la plataforma y su interoperabilidad
- Soporte a estándares

El rol de la interoperabilidad



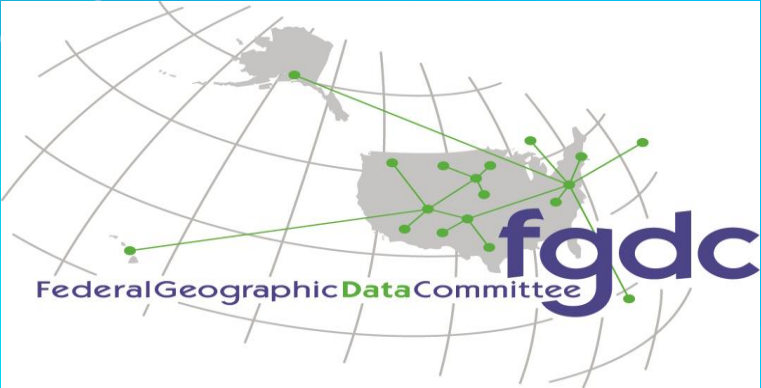


• **LOGRAR LA INTEROPERABILIDAD**



ArcGIS Technology

(supporting standards)



Demostración



Soporte OGC

SERVER TECHNOLOGIES

Server

Support WMS, WFS, WCS, WPS, WMTS, KML, SLD, FE

ArcGIS Online / Portal

CLIENT TECHNOLOGIES

Desktop

wms, wcs, wfs kml oPeNDAP, gml, NetCDF, geopackage

Runtime

Kml, wms, wmts

ArcGIS Online / Portal

Register wms, kml services
Webmap / mapviewer : Add wms, wmts, kml layers

Javascript Web Api

wms, wmts, kml

ArcGIS Platform Components

Portals
(AGOL, Portal)

Providing &
Consuming

Developer Solutions
(runtime, Javascript
Api)

Consuming

Server

Providing

Desktop
(ArcMap & PRO)

Consuming

Apps

Consuming

Core Standards

Metadata
(ISO, FGDC, ...)

Data
(Geopackage,
geoJSON, gml-
JPEG 2000...)

**Portrayal
Standards**

Services
(wms,wfs,wcs,
wps,sos,cs-w, ...)

Standards Support

portals
(ArcGIS Online, Portal for ArcGIS)

**Producing &
Consuming**

- **Producing**

- **Hosted WMS service (2016)**
- **Hosted WFS Service (2016)**

- **Consuming**

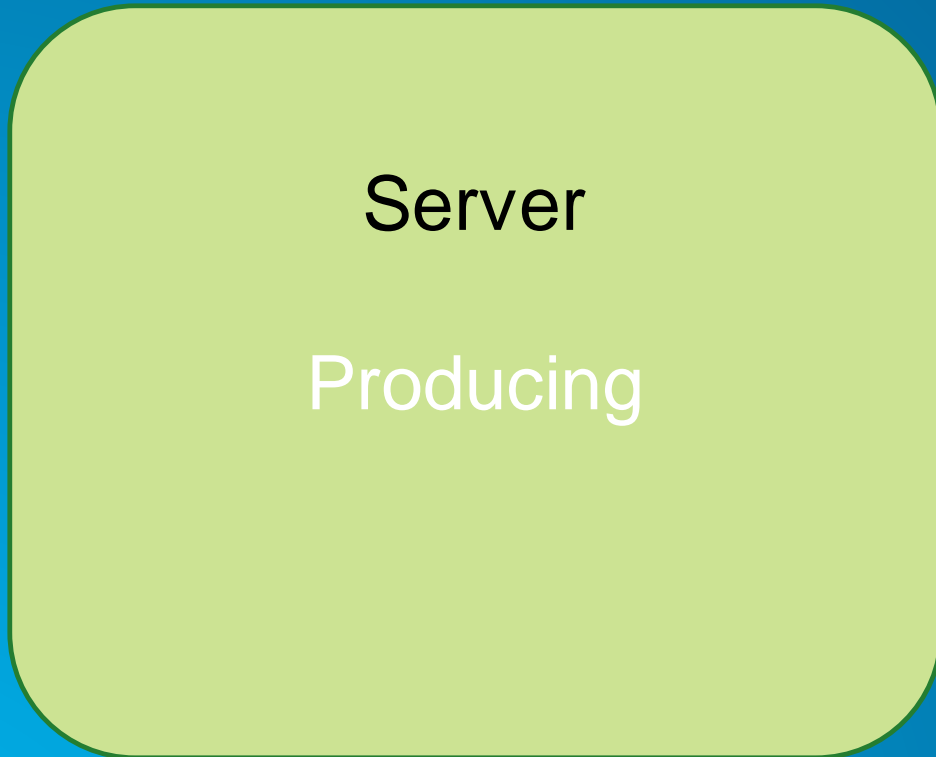
- **WMS (support identify operation)**
- **WMTS**
- **WFS (2016) – Support as a first class layer type**
- **WCS**
- **GeoPackage**
- **KML**
- **Metadata Support (@ version 3.8)**

 Ongoing Work

 Planned Work

 Supported Today

Standards Support



- **Server**
 - WMS
 - WFS (WFS-T)
 - WCS
 - WMTS
 - WPS
 - KML
 - **GeoJSON (@ 10.4)**
 - **WPS 2.0**

 Ongoing Work

 Planned Work

 Supported Today

Standards Support

Developer Solutions
(Runtime, Javascript
Api)

Consuming

- **Runtime**

- Wms
- Wmts
- GeoPackage
- **Wfs**

- **Javascript Api**

- WMS
- WMTS
- **WFS (@ version 3.1.4)**

 Ongoing Work

 Planned Work

 Supported Today

Standards Support

Apps
Consuming

- **Apps**
 - **WMS , WMTS , WFS, WCS, GeoPackage**

 Ongoing Work

 Planned Work

 Supported Today

Standards Support

Desktop
(ArcMap & PRO)

Consuming

- **ArcMap**

- WMS , WMTS , GeoPackage, WCS, KML
- WFS
- **WFS-T (part of production mapping)**

- **PRO**

- **WMS , WMTS , GeoPackage, KML**
- **WFS /WFS-T**
- **WCS**

 Ongoing Work

 Planned Work

 Supported Today

Standards Support

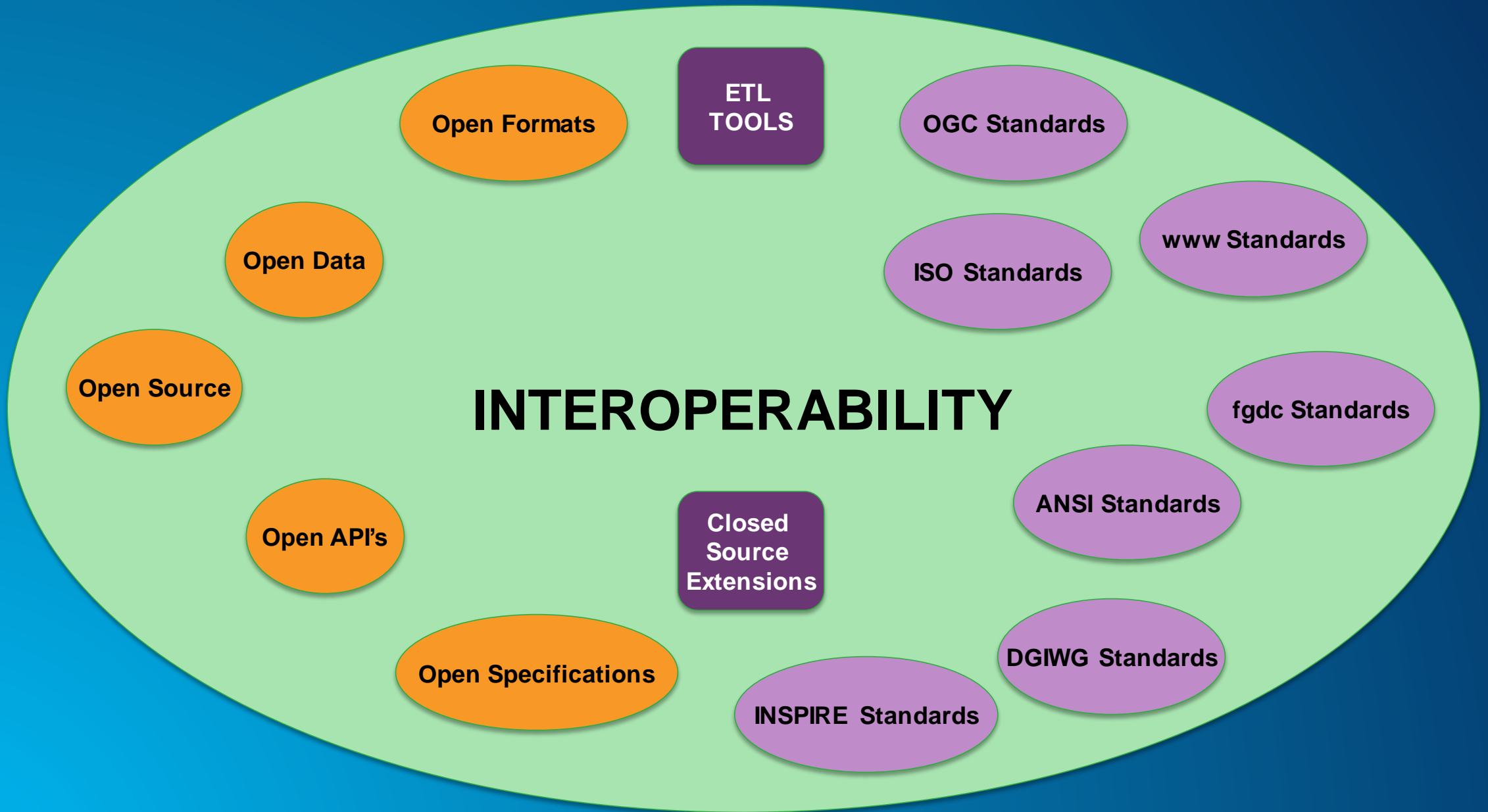
Desktop
(PRO)
Consuming

- **PRO 1.1**
 - WMS , WMTS , Geopackage, KML,
 - WFS (import –part of Data Interop)
- **PRO 1.2**
 - **WMS , WMTS , Geopackage, WFS**
/WFS-T
- **PRO (2016)**
 - **WCS**

 Ongoing Work

 Planned Work

 Supported Today



Achieving Interoperability

Algunos de los enlaces de librerías Open Source de Esri

- <https://github.com/Esri/geoservices-js>
- <https://github.com/Esri/Terraformer>
- <https://github.com/ajturner/geoservices-ruby>
- <http://dtc-sci01.esri.com/OGCApps/OpenLayersApp>
- <https://github.com/kevinsigwart/EsriOpenLayersClient/>
- <https://github.com/Esri/esri-leaflet>
- <https://github.com/Esri/koop>
- <https://github.com/Esri/3d-cities-template/tree/master/Workflows/3DCityMaintenance/CityGML%20Tools>

<http://esri.github.io/>

Preguntas

